

## TECHNICAL DATA SHEET

### DESCRIPTION

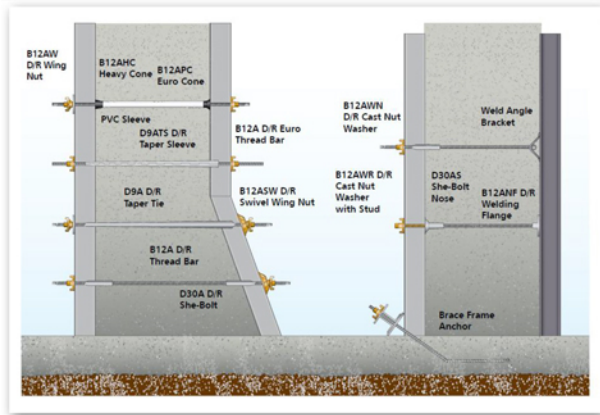
B12A D/R Thread Bar is a high strength, fast-acting, cold-rolled contour thread.

B12A D/R Thread Bar Accessories are high strength steel, fast-acting contour thread accessories.

### APPLICATION

B12A D/R Thread Bars are designed for securing and spacing clamp type forms.

B12A D/R Thread Bar Accessories are used with the Euro Bar, D/R Thread Bar, D9A D/R Thread Taper Tie or D30A D/R Thread She-Bolts for securing and spacing clamp type forms.



### FEATURES

- The B12A D/R Thread Bar's 2-1/2 threads per inch offers fast installation and stripping.
- D/R Thread Bar is available in 20'-0" standard lengths and can be cut to specific project requirements.
  - Field cutting with Carborundum blades is easily accomplished without thread damage.
- B12A D/R Thread Bar Accessories are available with 2-1/2 threads per inch.
- B12A D/R Thread Bar Accessories have a SWL providing a factor of safety of approximately 2 to 1.
- B12AC D/R Thread Hex Coupler
  - Available in two sizes, 15mm and 20mm
- B12AWN Cast Nut Washer
  - Available in two sizes, 15mm and 20mm
  - Designed to distribute applied loads over the form members, combining the special advantage of a washer and nut into one piece
  - Made from high strength malleable iron with electrogalvanizing finish per ASTM B633 SC1 Type II

- B12ANF D/R Welding Flange
  - Available in 15mm size only
  - Designed for one-sided forming applications by welding it to a soldier beam or piling to attach the form tie
- B12AHC Heavy Cones
  - Plastic cones are used with PVC Sleeves to protect B12A D/R thread bar and B12AD Euro Bars
  - Use Schedule 40 Nominal Size 3/4" PVC sleeve for 15mm Cone and Schedule 40 Nominal 1" for 20mm cone
  - B12AHC Heavy Cones are available in two sizes, 15mm and 20mm
  - Internal Euro Cones (B12APC) are in 15mm size only
- B12ACN D/R Cast Hex Nut
  - Available in two sizes, 15mm and 20mm
  - Made from cast steel
- B12ASN D/R Thread Steel Hex Nut
  - Available in two sizes, 15mm and 20mm
- B12AW D/R Wing Nut
  - Available in two size, 15mm and 20mm
  - Made from high strength malleable iron with electrogalvanizing finish per ASTM B633 SC1 Type II
  - Can be used with a flat plate or batter washer
- B12ASW D/R Swivel Wing Nut
  - Available in two sizes, 15mm and 20mm
  - Features a heavy duty ribbed washer base in one assembly to reduce the number of working parts
  - Made from high strength malleable iron with electrogalvanizing finish per ASTM B633 SC1 Type II

### RELATED PRODUCTS

- B12AD Euro Bar
- D23 Water Resistant Washer
- B30A D/R Thread She-Bolt
- D9A D/R Thread Taper Tie

### HOW TO ORDER

To Order B12A Thread Bar:

Specify: (1) quantity, (2) name, (3) length.

Example: 500 pcs. B12A D/R Thread Bar, 20'-0" long.

To Order B12A Thread Bar Accessories:

Specify: (1) quantity, (2) name.

Example: 200 pcs. B12ASW D/R Swivel Wing Nuts.

### ORDERING INFORMATION

#### D/R THREAD BAR

Product Code	Description	Weight
121710	20MM X 20'-0"; SWL=32,000 LBS NON-WELDABLE	1.60 LB
121715	15MM X 20'-0"; SWL=20,000 LBS	1.00 LB

#### D/R THREAD BAR ACCESSORIES

Product Code	Description	Weight
100015	3/4" B12A EGALV	4.30 LB

## TECHNICAL DATA SHEET

### D/R THREAD BAR - EURO BARS

Product Code	Description	Weight
146350	15MM X 19'-1"; SWL=21,300 LBS WELDABLE	19.10 LB
146351	20MM X 19'-1"; SWL=38,800 LBS WELDABLE	33.66 LB

### D/R EURO THREAD BAR 15MM AND 20MM DIAMETERS ONLY

Product Code	Description	Weight
127204	15MM X 19'-1"; SWL=21,300 LBS NON-WELDABLE	19.10 LB
127210	20MM X 19'-1"; SWL=38,800 LBS NON- WELDABLE	33.66 LB

### D/R THREAD BAR ACCESSORIES

Product Code	Description	Weight
122019	15MM B12AC HEX COUPLER; SWL=21,900 LBS - 97.4 KN	0.89 LB
123607	20MM B12AC HEX COUPLER; SWL=38,700 LBS - 172.1 KN	1.80 LB
127596	15MM B12AHC HEAVY CONES	0.03 LB
127597	20MM B12AHC HEAVY CONES	0.04 LB
F722001	15MM B12APC INTERNAL EURO CONE	0.14 LB
F722110	15MM SWIVEL WING NUT; SWL=21,900 LBS - 97.4 KN	2.79 LB
127207	15MM B12ANF WELDING FLANGE; SWL=21,900 LBS - 97.4 KN	1.50 LB
145058	15MM 3/4 NOMINAL SCH 40 PVC SLEEVE 10' LONG	0.23 LB
100054	15MM X 550MM	4.12 LB
100055	20MM X 600MM	8.69 LB
122020	15MM B12AW WING NUT; SWL=21,900 LBS - 97.4 KN	0.91 LB
123605	20MM B12AW WING NUT; SWL=39,200 - 174.4 KN	1.51 LB
127205	15MM B12AWN CAST NUT WASHER; SWL=21,900 LBS - 97.4 KN	1.64 LB
146400	15MM B12AWS WATERSTOP PLAIN	2.10 LB
122021	15MM B12ASW SWIVEL WING NUT - SQUARE PLATE; SWL=21,900 LBS - 97.4 KN	3.11 LB
123606	20MM B12ASW SWIVEL WING NUT - SQUARE PLATE; SWL=39,200 LBS - 174.4 KN	3.00 LB
145554	20MM B12ASW SWIVEL WING NUT - ROUND PLATE; SWL=32,500 LBS - 144.6 KN	5.94 LB
145181	32MM B12ASW SWIVEL WING NUT - SQUARE PLATE; SWL=32,500 LBS - 144.6 KN	7.09 LB
122017	15MM B12ACN D/R CAST HEX NUT; SWL=21,900 LBS - 97.4 KN	0.55 LB
122018	15MM B12ASN D/R STEEL HEX NUT; SWL=20,130 LBS - 89.5 KN	0.24 LB

### MANUFACTURER

Dayton Superior Corporation  
 1125 Byers Road  
 Miamisburg, OH 45342  
 Customer Service: 888-977-9600  
 Technical Services: 877-266-7732  
 Website: www.daytonsuperior.com

### WARRANTY (ACCESSORIES)

Limited Warranty. Dayton warrants, for a period of 60 days from the date of shipment (three years from the date of shipment in the case of formwork, excluding any consumable Products included with such formwork), that Products and any associated application drawings and engineering services provided by Dayton ("Ancillary Services") will be free from defects in material and workmanship and, in the case of custom designed formwork, that the formwork will meet the specifications set forth in the design drawings approved by Dayton and Customer. Any claim under this warranty must be made in writing within such warranty period. If any Product and/or Ancillary Service covered by a timely claim are found to be defective, Dayton will, within a reasonable time, make any necessary repairs or corrections or, at Dayton's option, replace the Product. Unless pre-authorized by Dayton in writing, Dayton will not accept any charges for correcting defects or accept the return of any Product. This warranty will not apply to any Products that have been subjected to misuse, neglect, storage damage, misapplication, accident or any other damage caused by any person other than Dayton, or that have not been maintained in accordance with Dayton's specifications. THIS LIMITED WARRANTY IS IN LIEU OF ALL OTHER WARRANTIES AS TO THE PRODUCTS AND ANCILLARY SERVICES. DAYTON MAKES NO OTHER WARRANTIES OR GUARANTEES, EXPRESS OR IMPLIED, INCLUDING ANY WARRANTY OF MERCHANTABILITY, FITNESS FOR A PARTICULAR PURPOSE OR OTHERWISE. THE REMEDIES SET FORTH IN THIS SECTION ARE CUSTOMER'S EXCLUSIVE REMEDY FOR BREACH OF WARRANTY.