

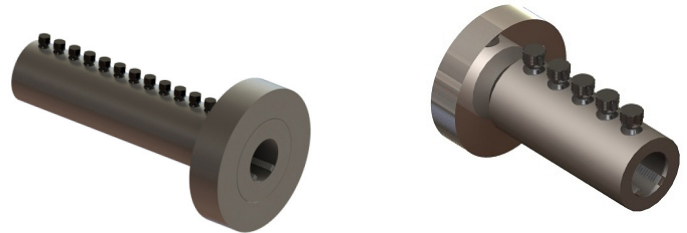
# D251 & D252 Bar Lock<sup>®</sup> End Anchors

## DESCRIPTION

Dayton Superior's Bar Lock End Anchor is used to provide embedment anchorage. It consists of a thick walled tube, specially designed lock shear bolts, serrated grip rails, and a welded, headed disc.

## FEATURES & BENEFITS

- Provides a full ductile behavior mode developing full ultimate strength capacity of the bars and can be effectively used for end anchoring, stirrup replacements, continuous splicing and heavy anchorage of light standards and other signage. Quick and easy installation
- No bar end preparation
- Installation at the job site
- Saves time and money
- No fabrication required
- One product for all applications
- Gross bearing area of 10Ab



## PRODUCT DATA

- Rebar sizes #4 (13mm) through #18 (57mm)
- Available in plain, epoxy coated, or galvanized finish
- Type 2 with Grade 60 rebar The Dayton Superior D251 - Bar Lock<sup>®</sup> End Anchor is designed to simplify rebar splicing in areas where rebar congestion prevents use of long lap splices or large diameter hooked rebar.
- The system also has a two-piece threaded version of the end anchor, available in bar sizes #4 through #18. The two-piece version can be used effectively in situations where installation restrictions require a two-piece unit.
- The D252L provides the contractor with additional installation flexibility, providing the ability to slide the end anchor to any position desired along a length of rebar and accommodates inverted installation, helping simplify installation in applications where heavy rebar congestion is encountered.